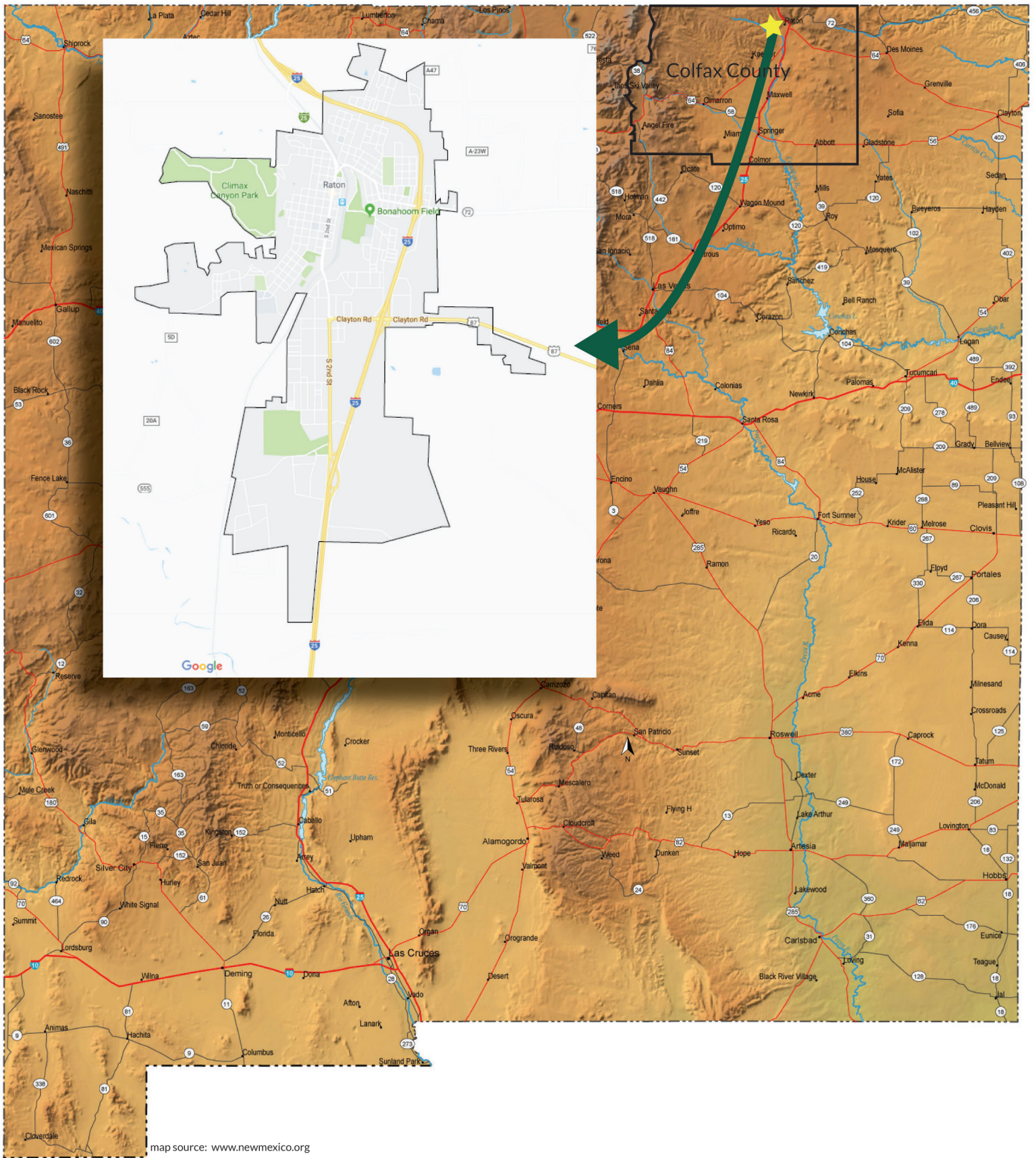




DOWNTOWN RATON WALKABILITY WORKSHOP

October 16, 2017





This report was supported by Cooperative Agreement Number 5-U48-DP-005034 from the Centers for Disease Control and Prevention (CDC). The findings and conclusions of this report are those of the authors and do not necessarily represent the official position of the CDC.

This report was completed March 2018.

TABLE OF CONTENTS

Ramblin' Round Raton.....	4
Partners.....	6
Overview of Walkability Workshop.....	8
Roundhouse Memorial Park Dog Park.....	10
Apache Avenue.....	12
2nd Street by Ripley Park.....	14
Longfellow School.....	16
Raton Intermediate School.....	18
Railyard.....	20
Impact & Feasibility.....	22
Appendices.....	24

RAMBLIN' ROUND RATON

Ramblin' Round Raton (RRR) aims to promote healthy lifestyles through walking and hiking in Raton and on nearby public lands. Research shows that walking can help us live longer and feel better. Ramblin' Round Raton promotes use of walkways and trails on public land. It organizes and supports walking groups, sponsors walking events, advocates for walkable streets and highways, promotes the development of trails, and supports the enhancement of walking places.

Ramblin' Round Raton is supported by a coalition established by N.M. State Parks, N.M. Department of Health, Miners' Colfax Medical Center, Rocky Mountain Physical Therapy, the City of Raton Department of Parks and Recreation, National Park Service, GrowRaton!, and the University of New Mexico Prevention Research Center.

Walking and Hiking



A guide to places in and near Raton, N.M.



View of Raton from Climax Canyon Nature Trail





Amtrak Station

PARTNERS



New Mexico State Parks

www.nmparks.com

The mission of State Parks is to protect and enhance natural and cultural resources, provide first-class recreational and education facilities and opportunities, and promote public safety to benefit and enrich the lives of visitors.



New Mexico Department of Health

nmhealth.org

Through its Healthy Kids Healthy Communities program, the Department of Health focuses on increasing opportunities for healthy eating and physical activity where children and low income adults live, learn, play, work, eat, and shop.



University of New Mexico Prevention Research Center

prc.unm.edu

The Prevention Research Center at The University of New Mexico addresses the health promotion and disease prevention needs of New Mexico communities through participatory, science-based, health promotion and disease prevention research. It fulfills this mission through collaboration, training, dissemination, and evaluation activities.



GrowRaton!

growraton.org

GrowRaton! is a 501(c)(3) economic development organization registered in New Mexico as a nonprofit corporation. This all-volunteer organization seeks to be a catalyst for community and economic development in the greater Raton area. GrowRaton!'s role is to facilitate and promote a strong, healthy, and sustainable local economy.



Miner's Colfax Medical Center

www.minershosp.com

Miners' Colfax Medical Center serves a regional population of approximately 12,000 and staffs about 190 employees. MCMC includes a 25-bed critical access facility, a long-term care facility, and a miners' outreach program.



Rocky Mountain Physical Therapy

www.ratonphysicaltherapy.com

Rocky Mountain Physical Therapy provides physical therapy, including aquatic therapy, to residents of Raton and the surrounding area.



**CITY OF RATON
PARKS & RECREATION**

City of Raton Parks & Recreation Department

www.ratonrecreation.com

The mission of the City of Raton's Park and Recreation Department is to enhance the health, wellness and quality of life for the residents of Raton, regional residents and visitors by providing and promoting wholesome recreational activities, well-maintained recreation facilities, and customer service-oriented staff.



The National Park Service

www.nps.gov

The National Park Service preserves unimpaired the natural and cultural resources and values of the National Park System for the enjoyment, education, and inspiration of this and future generations. The Park Service cooperates with partners to extend the benefits of natural and cultural resource conservation and outdoor recreation throughout this country and the world.



The Center for Sustainable Community

www.sustainraton.org

The Center for Sustainable Community provides leadership, builds partnerships, and enables the innovation necessary to reestablish local food and energy production, strengthens educational systems, and establishes placemaking in Colfax County communities.

PARTICIPANTS

Linda Bennett

Carol Bridge

Jared Chatterley - Director, Raton Parks and Recreation

Ashley Cummings - Graphic Designer, UNM Prevention Research Center

Sally Davis - Director, UNM Prevention Research Center

Jeff DeBellis - Associate Scientist II, UNM Prevention Research Center

Al Frydryk

Jack Gill

Emma Green - Raton Coordinator, Healthy Kids, Healthy Communities

Amy Gundelach

Kristie Medina

Michael Neurauter

Geoff Peterson - Executive Director, Center for Sustainable Community

Jason Philips - Director, Raton Public Works

John Robertson

Tim Rogers - Trails Program Manager, Active Transportation Planning

Nichole Romero - Health Promotion Specialist, N.M. Department of Health

Sue Smith

David Stafford

Patricia Walsh - Regional Interpretive Ranger, N.M. State Parks

Kathryn Webb

Howard Woodworth

Leah Yngve - Health Educator, N.M. Department of Health

OVERVIEW OF WALKABILITY WORKSHOP



Ramblin' Round Raton (RRR) coordinated a walkability workshop for members of the community to come together at the Center for Sustainable Community and assess different parts of the city for pedestrian friendliness. The group modeled the event after a similar workshop in the Village of Cuba in 2009. Prior to the workshop, RRR identified six areas of focus. They chose the locations because they are popular pedestrian thoroughfares, close to schools, or thought to be confusing areas for pedestrians.

The workshop began with introductions and a brief overview of RRR. Nichole Romero, Raton resident and Department of Health's Health Promotion Specialist, discussed the health and economic benefits of walking, Sally Davis of the Prevention Research Center (PRC) talked about Step into Cuba, the program that RRR modeled itself after, and Tim Rogers, a consultant with the Department of Health's Healthy Kids, Healthy Communities program, offered his perspective on best practices for walkable streets - including an overview of the Complete Streets guidelines.

The group then broke into teams of two to five people to evaluate the different focus areas. Each group had a leader, a scribe, and a photographer. They used walkability audit forms based on those used in Cuba (see appendices).

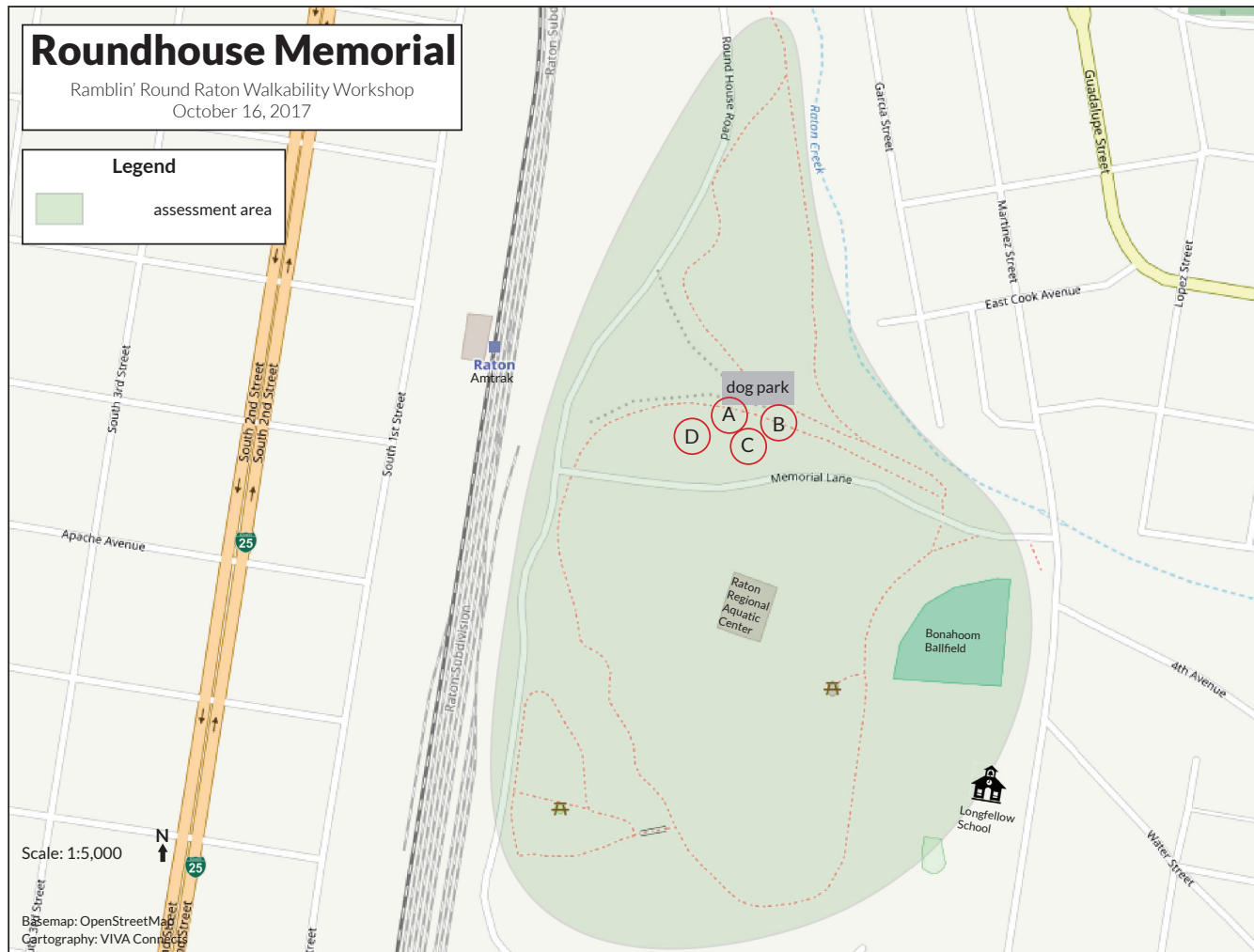
After an hour, the groups reconvened at the Center for Sustainable Community. They made notes of their observations on a large wall map. Each team spent a few minutes presenting their observations to the larger group while someone took notes. From the presentations, Patricia Walsh, Raton resident and N.M. State Parks Regional Interpretive Ranger, identified five recommendations that seemed within reach. With help from the PRC, Patricia facilitated a discussion about impact and feasibility of the five recommendations.



“A lot of what we have is really walkable.”

— Jason Philips

ROUNDHOUSE MEMORIAL PARK DOG PARK



Description

Roundhouse Memorial Park is a large open space bordered by Garcia St. and E. 4th St. to the east, Roundhouse Rd. to the west, Sugarite Ave. to the north, and Chavez Dr. to the south. The park contains the Raton Regional Aquatic Center, Bonahoom Ballfield, a dog park, and a network of walking paths. Longfellow School, Raton Creek, and the Amtrak station are all adjacent to the park. Memorial Lane bisects the park.

The dog park is located just north of Memorial Lane.

Evaluators

Al Frydryk
Amy Gundelach
Nichole Romero
Patricia Walsh

Observations

- A. No path connecting Memorial Lane with Dog Park
- B. No parking for Dog Park
- C. People must walk through high weeds to access Dog Park
- D. No information sign at park entrance gate

Recommendations

1. Recruit volunteers (e.g. dog walkers, Colfax County Young Marines, high school students) to clear paths to the dog park

Additional Points/Discussion Topics

Raton Public Works Director Jason Philips said that Raton was awarded \$50,000 through the Department of Transportation's (DOT) Recreational Trails Program to rehabilitate all the trails in Roundhouse Memorial Park – but they gave it back because there were so many hoops to jump through and only 1/3 of the money would have gone to actual infrastructure.



The group used a white board in conjunction with a photo log to document points of interest in each assessment area. Left: secondary path; top right: from dog park gate towards aquatic center; bottom right: bench

APACHE AVE. BETWEEN 2ND ST. AND CLIMAX CANYON PARK



Sidewalks along Apache Ave. disappear from near S. 6th St. to where Apache dead ends, west of S. 8th St.

Description

This section of Apache Ave. runs east-west between S. 2nd St. (the main thoroughfare in the old part of town) and the entrance to Climax Canyon City Park. The original township of Raton ended at S. 6th St., about three blocks from the park's entrance. The street is lined primarily with single family homes and occasional small businesses, churches, and schools.

The park is also the site of the City of Bethlehem, a Christmas display that the Lions Club has set up each year since 1947 in partnership with the City of Raton.

Evaluators

Michael Neurauter

Geoff Peterson

John Robertson

Sue Smith

Observations

- A. No crosswalk at S. 2nd St. & Apache Ave.
- B. Several sections of missing or narrow sidewalks
- C. Limbs and shrubs block sections of sidewalk between S. 3rd St. and S. 4th St.
- D. Sidewalk surfaces are uneven
- E. Sidewalks have litter or debris
- F. Uneven driveways make walking difficult
- G. Sidewalks do not have buffer separating them from street
- H. Landscaping along sidewalk is in varying condition
- I. Dogs at adjacent fence between S. 6th St. and S. 7th St.
- J. Cars are parked on sidewalks where driveways cross
- K. Sidewalks are scarce west of S. 6th St.
- L. Gate at Climax Canyon Park entrance forces hikers to squeeze around
- M. No crosswalk at S. 2nd St. & Galisteo Ave.
- N. Light traffic makes walking or cycling on the street feasible

Recommendations

1. Close off Apache Ave. to cars from S. 2nd St. to Climax Canyon entrance for a Christmastime walk to the City of Bethlehem

2ND ST. BETWEEN RIPLEY PARK AND SUGARITE AVE.



Description

The area where N. 1st and N. 2nd Streets come together is a labyrinth of overpasses, underpasses, and intersections. New Mexico Route 72 follows Sugarite Ave., turns left at a three-way stop, goes underneath a railroad overpass and N. 1st St., then connects with N. 2nd St. For those coming off I-25 from the north and transitioning onto the I-25 business route, this is the main entrance into downtown Raton. North 1st St. goes around Ripley Park, crosses over NM-72, and connects with N. 2nd St. to become Canyon Drive. Pedestrians often need to walk well out of the way to cross roads and railroad tracks in this area.

Ripley Park is a small city park with a gazebo, statues, and a playground. It is cut by NM-72 with the larger section of the park on the SE side of the road and the smaller section on the NW side.

Evaluators

Linda Bennett
Jeff DeBellis
David Stafford
Kathryn Webb

Observations

- A. Sidewalk missing on north side of bridge
- B. Cracking in sidewalk around N. 1st St. & Savage Ave.
- C. Dumpster blocks ADA access to sidewalk at N. 1st St. & Savage Ave.
- D. Lamppost in sidewalk near N. 2nd St. & Savage Ave.
- E. Broken glass in underpass
- F. Sidewalk width varies between 5' and 12'
- G. Uneven driveways make walking more difficult
- H. There is no buffer between sidewalk and road
- I. There is no landscaping along sidewalks
- J. There are no crosswalks at intersection of N. 1st St., Railroad Ave., and Sugarite Ave. "This is a confusing and dangerous intersection because it is a three-way stop."
— Patricia Walsh
- K. Many sidewalks do not have curb ramps for stroller or wheelchair access
- L. Drivers do not have a clear line of sight coming from the underpass to the N. 1st St., Railroad Ave., and Sugarite Ave. intersection
- M. Drivers appear to drive fast
- N. There are no traffic calming measures such as speed humps
- O. There are video cameras and lighting in the underpass for pedestrians. Community members confirmed that the lights work, but the cameras are nonfunctional.
- P. The underpass has good separated pedestrian walkways, but the railings could use fresh paint and there is brush in the sidewalk



Intersection of N. 1st St. and Sugarite Ave.

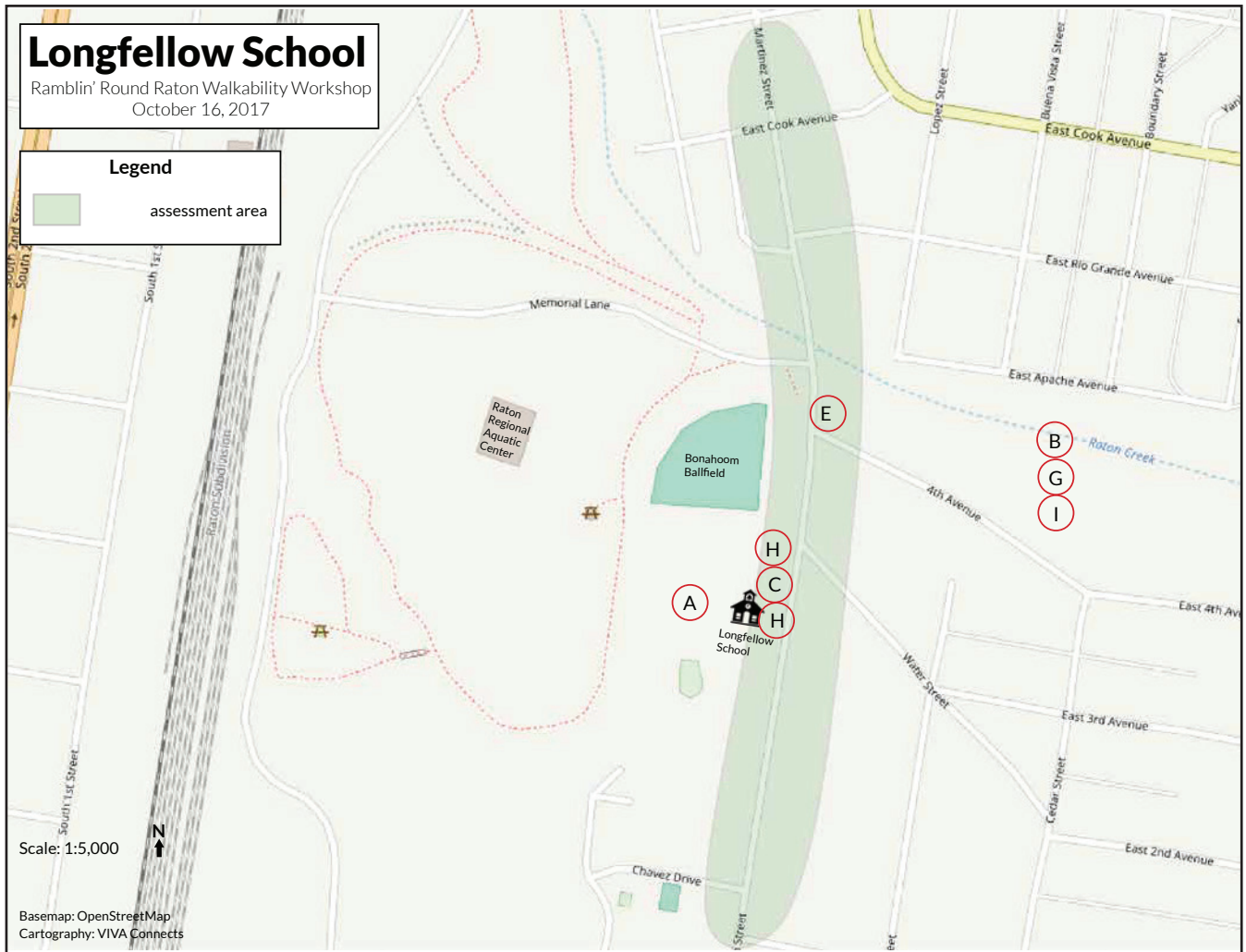
Recommendations

1. At the intersection of N. 1st St., Sugarite Ave. and Railroad Ave., paint crosswalks at the three locations where there are stop signs. Evaluate the effectiveness of the three-way stop and consider alternatives such as a four-way or a two-way stop.
2. Remove sidewalk in island in above intersection that lures pedestrians for no good reason
3. Replace confusing intersection at N. 1st St. and N. 2nd St. with traffic circle
4. Paint a crosswalk across Canyon Ave. at Moulton Ave.
5. Paint a crosswalk across N. 2nd St. at Savage Ave.



Kathryn Webb stands between a curb ramp (to her right) and a dumpster that completely blocks the sidewalk.

LONGFELLOW SCHOOL



Crosswalk at Memorial Ln. and Martinez St. facing north



Sidewalk transition facing SE

Description

Longfellow Elementary School is part of the Raton Public School District. It is located on E. 4th St. near the intersection with Water St. The school is bordered by Roundhouse Memorial Park on the west side and Bonahoom Park baseball field to the north. The school faces residential areas to the south and east.

Evaluators

Ashley Cummings
Tim Rogers

Observations

- A. Pedestrian access to the school from the west side is confusing
- B. One route that does provide access is not well defined
- C. There is a 6' sidewalk with a buffer (parking area) near the school but it necks down abruptly to a unpaved walking path
- D. Very few ADA ramps near the school
- E. There is a very good crosswalk with signage located on E. 4th St. north of the school
- F. Sidewalk widths range from 4' to 6'
- G. Dumpster takes up room on a sidewalk
- H. There are entrances to the school on the east side and at the NW corner
- I. There is an old-school style school zone sign on the east side of Martinez St.

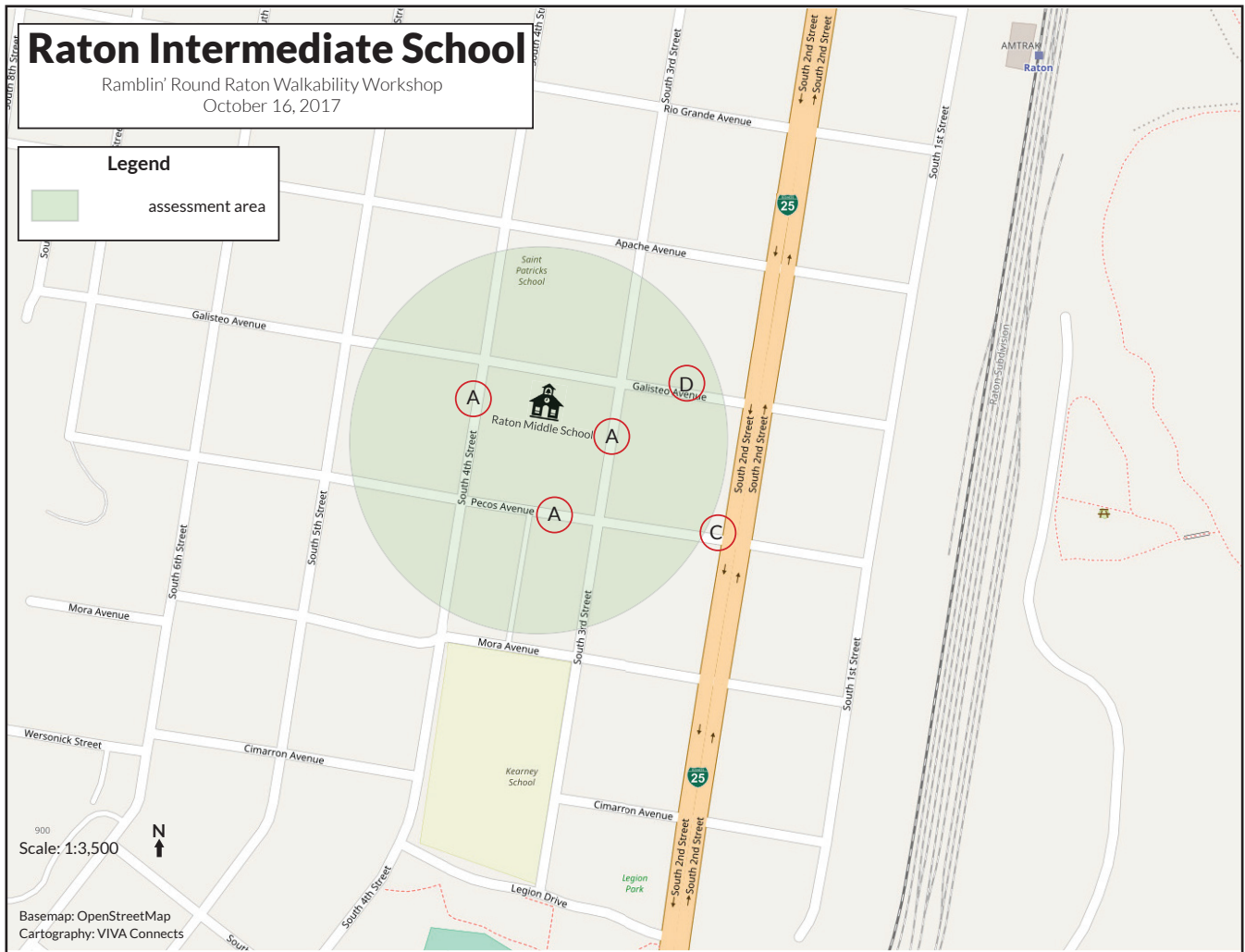
Recommendations

1. At least two crosswalks near the school need repainting for higher visibility
2. Update signs
3. Improve transition of sidewalk on SE corner of school



Crosswalk sign south of Longfellow School, facing south

RATON INTERMEDIATE SCHOOL



A crosswalk at Galisteo Ave. & S. 3rd St.



A faded crosswalk at Apache Ave. & S. 3rd St.



Sally Davis, Kristie Medina, and Jared Chatterley discuss the area at Galisteo & S. 3rd

Description

Raton Intermediate School is part of the Raton Public School District. It occupies the city block between S. 3rd and S. 4th Streets and Galisteo and Pecos Avenues.

Evaluators

Jared Chatterley
Sally Davis
Kristie Medina
Leah Yngve

Observations

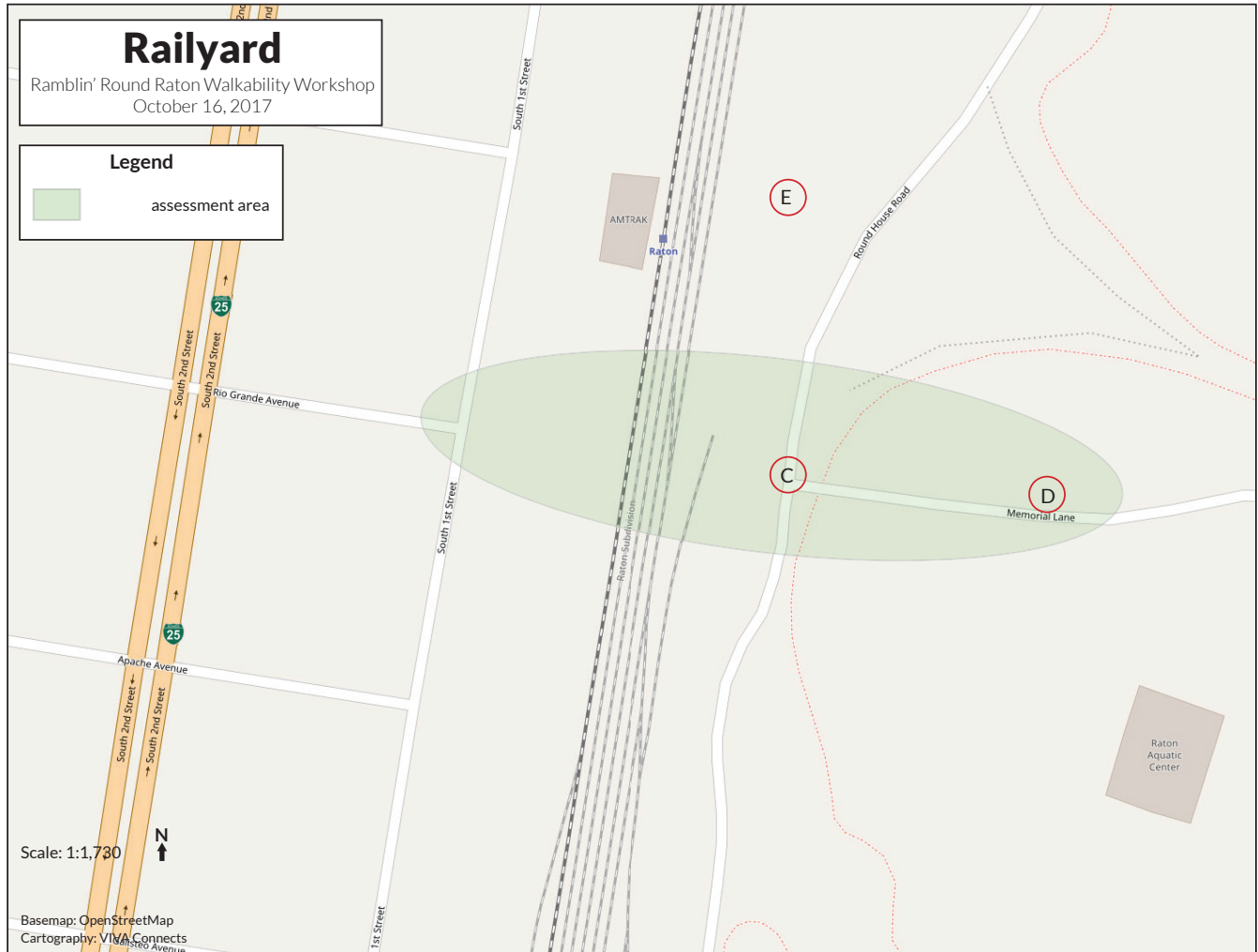
- A. Sidewalks in bad repair across the street from school along S. 3rd St., S. 4th St., and Pecos Ave.
- B. Vegetation is an issue next to and on sidewalks
- C. No crosswalk at S. 2nd St. and Pecos Ave.
- D. Overgrown and disconnected sidewalks on Galisteo between S. 2nd St. and S. 3rd St.
- E. Crosswalks do not line up with sidewalks
- F. There are great sidewalk buffers where they exist

Recommendations

Additional Points & Discussion Topics

- Jared Chatterley said that in 2016 a Youth Corps group did a clean-up project around the school
- Clean up sidewalks around school

RAILYARD BETWEEN RIO GRANDE AVE. AND AQUATIC CENTER



Nichole Romero stands in front of the Railyard underpass



Al Frydryk stands in the middle of the street to illustrate the lack of a safe crosswalk

Description

Raton’s “railyard” is a nebulous area that separates the city’s central business district from Roundhouse Memorial Park. Though it is possible for a person to walk across the tracks at any point, there is no dedicated crossing between the NM-72 underpass at the north end of downtown and the S. 2nd St. underpass at the south end of downtown – a distance of approximately one mile. Rio Grande Ave. and Memorial Ln. both dead-end into the tracks directly across from each other. Raton’s Amtrak station is one block north of this spot.

Evaluators

Al Frydryk
Amy Gundelach
Nichole Romero
Patricia Walsh

Observations

- A. No defined walkway of any kind through railyard
- B. Difficult to cross area because of rocks and tracks
- C. No crosswalk from railyard across Roundhouse Rd.
- D. Once at Memorial Ln., there are no sidewalks leading to the Aquatic Center; pedestrians must either walk in road or in dirt alongside
- E. Historic tunnels beneath railyard are no longer in use
- F. Paths do have ramps for wheelchair or stroller access
- G. Drivers and pedestrians have clear lines of sight at all crosswalks
- H. There are no speed humps or speed tables to slow traffic
- I. Drivers do not have sufficient distance away from walkways or bike paths
- J. There is not adequate lighting along walkways and bike paths

Recommendations

- 1. Paint bicycle lanes on Memorial Ln.
- 2. Clear a pathway for easier crossing of the railyard
- 3. Consider adding a crosswalk across Roundhouse Rd. where it intersects with Memorial Ln.

Additional Points/Discussion Topics

- Jason Phillips stated that creating a pedestrian path through the railyard is difficult. Any overpass would have to be twice the height of a boxcar. Doing a railroad crossing would be a multi-million dollar project.
- Al Frydryk commented that clearing a path through the railyard might be pointless because the area is so large that people will cross wherever they want.

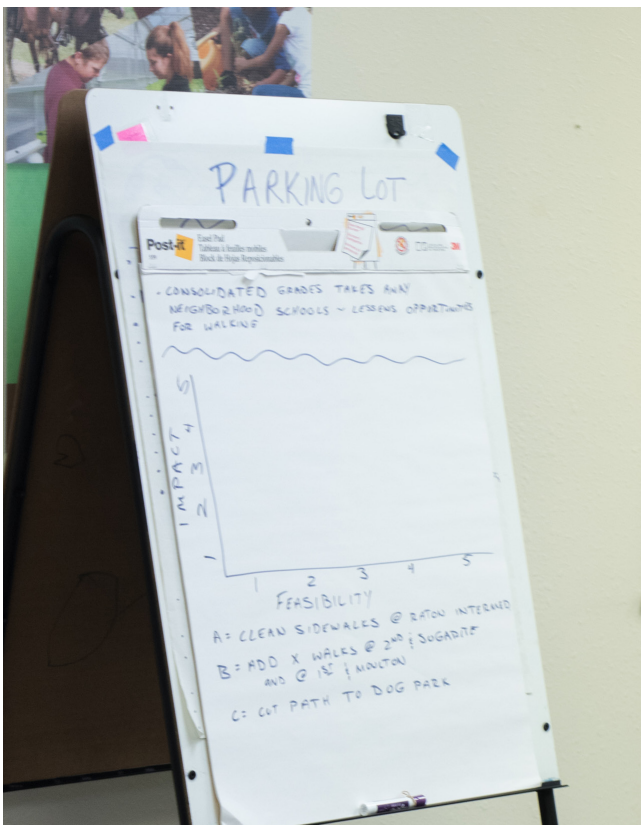
IMPACT & FEASIBILITY

During the last fifteen minutes of the workshop, the group discussed five possible things that they could do to improve walkability and walking culture in Raton:

- A. Clean the sidewalks around Raton Intermediate School
- B. Paint crosswalks at the intersections of N. 1st St./Sugarite Ave./Railroad Ave. and Moulton Ave. & Canyon Dr.
- C. Cut brush in order to clear a path to the dog park in Roundhouse Memorial Park
- D. Hold an organized walking event along Apache Ave. to the City of Bethlehem display at the entrance to Climax Canyon
- E. Paint stripes along the shoulders of Memorial Ln. to demarcate space for pedestrians and bicyclists

The original intention was to plot each of the five ideas on an Impact vs. Feasibility Matrix. Because so many stakeholders, agency representatives, local leaders were present, the group was able to decide right away how feasible or difficult some of the recommendations were. Rather than plot them on a chart, the group jumped into a lively discussion about which ones to implement and how. Patricia Walsh would contact the Assistant Engineer at the N.M. Dept. of Transportation District IV regarding painting or repainting some crosswalks.

John Robertson, who is involved with the Rotary Club, said that the club will consider paving some paths that connect the walking trails in Roundhouse Memorial Park with the dog park.



APPENDICES



School speed limit sign and crosswalk at Memorial Ln. and Martinez St. facing South

Ramblin' Round Raton invites you to assist with a

WALKABILITY WORKSHOP

**MONDAY, OCTOBER 16TH
3-6:30 PM
CENTER FOR SUSTAINABLE
COMMUNITY
130 PARK AVE. IN RATON, NM**

Join members of the Ramblin' Round Raton coalition and other volunteers to assess various walking routes in downtown Raton to enhance and promote walking for health and transportation. All are welcome - volunteers do not need any specific skills. Please dress appropriately to be outdoors, including comfortable walking shoes.

Snacks and drinks will be provided by the University of New Mexico Prevention Research Center.



Potential sites will include:

- Longfellow School
- Raton Intermediate School
- 2nd Street from Ripley Park to Sugarite Ave.
- Apache Ave. from 2nd Street to the entrance of Climax Canyon Park
- From the east end of Rio Grande Ave. across the rail yard to the Raton Regional Aquatic Center
- Roundhouse Memorial Park/access to Dog Park, etc.



viva-connects.org



FOR IMMEDIATE RELEASE: September 25, 2017

Volunteers Needed for Walkability Workshop

Raton, NM—Ramblin' Round Raton (RRR) is seeking volunteers to assess various walking routes in downtown Raton as part of a workshop to enhance and promote walking for both health and transportation.

The workshop is scheduled for 3-6:30 p.m. on Monday, October 16th at the Center for Sustainable Community, 130 Park Ave. in Raton. Drinks and snacks will be provided by the University of New Mexico's Prevention Research Center, one of the stakeholders in the RRR walking coalition.

“The workshop will give everyone a chance to see where we're at and consider where we'd like to be in terms of walkability,” said Patricia Walsh, an employee of N.M. State Parks and co-leader of RRR.

“Walking and physical activity can address alarming health and mental health issues in Colfax County such as diabetes, heart disease, obesity, and depression,” added New Mexico Health Department health promotions specialist Nichole Romero, another RRR co-leader.

After a brief overview of best practices for making communities more walkable, workshop participants will divide into small groups to assess on foot several target areas in town. Potential sites might include:

- Longfellow School
- Raton Intermediate School
- 2nd Street from Ripley Park to Sugarite Avenue
- Apache Avenue from 2nd Street to the entrance of Climax Canyon Park
- From the east end of Rio Grande Avenue across the rail yard to the Raton Regional Aquatic Center

The assessments are expected to last about an hour, after which the small groups will reconvene to discuss their findings and various alternatives for improving conditions. All are welcome - volunteers do not need any specific skills. Please dress appropriately to be outdoors, including comfortable walking shoes.

In early 2017, RRR published a free booklet titled “Walking and Hiking: A guide to places in and near Raton, N.M.” The booklet, which describes 23 trails in the Raton area, was printed with grant funding from the Miners' Colfax Medical Center Auxiliary and the McCune Charitable Foundation.



Ramblin' Round Raton Walkability Workshop
Oct. 16, 2017

"I hereby voluntarily and without compensation give my permission to the Ramblin' Round Raton and the University of New Mexico Prevention Research Center for the use and reproduction of video footage, photographs, or audio recordings of activities or events of the undersigned. I understand that the use of my image and/or voice will be for the purpose of furthering the health promotion/education initiative. The undersigned hereby warrants that he/she is over (18) years of age, and is competent to contract in his/her own name."

Please check all that apply

Name	Would you like to join the VIVA Connects ListServ? (please provide your e-mail)	Email Address (or best way to contact)	I represent:								I learned about this workshop through:				I am interested in helping with:		
			Raton Community	Ramblin' Round Raton	State agency	Elected official	Other	Email	Flyer	News Release	Word of Mouth	Other					



Raton Walkability Workshop Parks



Location: _____ Date: _____

Group Members: _____

Parks	Yes	No	Comments/suggestions/concerns
<p>Is there a walking path?</p> <p>If yes, what is the condition?</p> <p>If no, where could it be located?</p>			
<p>Are there any obstacles, such as cracks, rocks, protruding tree roots, sudden drop offs, or other hazards for users, including those who are in wheelchairs or visual or hearing impaired?</p> <p>If yes, please describe the obstacles and note on your map where they are located.</p>			
<p>Are there sufficient benches or places to rest?</p> <p>If no, where should they be?</p>			
<p>Are there signs notifying users of rules for dogs in the park, such as whether or not they are allowed, cleaning up after them, or keeping them on leash?</p> <p>If yes, what do they say? Are they easy to understand? Do people follow them?</p> <p>If no, would you suggest that signage be used and if so, what should it say?</p>			
<p>Is there a dedicated dog park in the park?</p> <p>If yes, are there any access issues?</p>			
<p>Is parking adequate?</p> <p>If no, please explain your concerns</p>			
<p>Are the conditions safe for pedestrians who walk from their vehicles to places in the park?</p> <p>If no, why not?</p>			

<p>Are there natural play spaces for children?</p> <ul style="list-style-type: none"> • dirt hill to run and climb on • logs for climbing • boulders for climbing • a place to create berms (i.e. dirt piles) • a place to build a small amphitheater or platform for dramatic play • trail through tall grass or bushes • a labyrinth • brush piles to crawl in • a pile of saplings or small branches to build with • sand pit with water supply near by • a place to build a small playhouse <p>If no, where could they be located?</p>			
<p>Have you documented all your park concerns?</p> <p>If no, what are they?</p>			



Raton Walkability Workshop

Roads



Location: _____ Date: _____

Group Members: _____

Sidewalks	Yes	No	Comments/Suggestions/Concerns
Are there sidewalks on both sides of the street? If no, where are sidewalks needed?			
Are the sidewalks continuous and free of missing sections? If no, provide location			
Are sidewalks free of poles, signs, shrubs or other items that block the sidewalk? If no, provide location			
Is the surface of the sidewalk smooth & even?			
Are sidewalks free of litter, debris or snow (in winter)?			
Is the sidewalk wide enough, especially for individuals with strollers, or wheelchairs and other disabilities to feel safe? Provide width: _____ ft _____ in			
Do uneven driveways through the sidewalks make walking more difficult?			
Is the sidewalk separated from traffic with a buffer (separation) between sidewalk and street? If yes, provide width: _____ ft _____ in			
Are there separate bike paths or lanes to keep bicyclists off sidewalks? If yes, do signs indicate bike paths?			
Is there landscaping along sidewalk? If yes, is it well maintained?			
Have you documented all your sidewalk concerns? If no, what are they?			

Intersections & Crosswalks	Yes	No	Comments/suggestions/concerns
Are there marked crosswalks at intersections? If yes, provide location and type of control (none, signs, traffic signal, etc.)			
Are there sufficient marked crosswalks between intersections? If yes, provide location and type of control (none, traffic signal, etc.)			
Are high visibility crosswalk markings used? Are they in good condition?			
Are there signs alerting drivers of pedestrian crossings?			
Are there curb ramps for individuals with strollers, or wheelchairs on all corners of intersections?			
Is the landing at the crossing large enough, especially for individuals with strollers or wheelchairs to wait away from the curb and feel safe at the intersections?			
Are there medians or islands where pedestrians can wait between traffic lanes? If yes, are they raised medians or islands?			
Do drivers have a clear line of sight at all crosswalks? If not, list barriers.			
Do pedestrians have a clear line of sight at all crosswalks? If not, list barriers.			
Have you documented all your sidewalk concerns? If no, what are they?			

Safety	Yes	No	Comments/suggestions/concerns
Is the roadway free of threats from impaired drivers? If no, provide locations of concern			
Do drivers drive at an appropriate speed? List posted speed limit: _____ mph			
Are there features such as speed humps or speed tables to slow traffic? If no, are they needed?			

Do drivers drive a sufficient distance away from walkways or bike paths?			
Do drivers yield to pedestrians?			
Do drivers obey stop signs?			
Do drivers use turn signals?			
Is truck traffic on the roadway a problem?			
Is the roadway free of blind curves?			
Are all segments of walkways visible from houses or commercial areas? If no, provide location			
Is there adequate lighting along walkways and bike paths? If no, provide location			
Does the roadway appear free of crime and / or drug activity? If no, provide locations of concern			
Is the roadway free of aggressive, rude, loitering or threatening people? If no, provide locations of concern			
Is the roadway free of dogs that may frighten pedestrians? If no, provide locations of concern			
Have you documented all your safety concerns? If no, what are they?			



Raton Walkability Workshop Schools



Location: _____ Date: _____

Group Members: _____

Schools	Yes	No	Comments/Suggestions/Concerns
<p>Are there sidewalks along the routes that children walk near the school?</p> <p>If yes, are they on both sides of the street? How wide are they? Record widths & mark on the map. Mark where sidewalks needed.</p> <p>Provide width: _____ ft _____ in</p>			
<p>If sidewalks exist, are there trees, grass, or other buffers between the sidewalk and street?</p> <p>Provide width: _____ ft _____ in</p>			
<p>Do sidewalks have ADA ramps at all corners?</p> <p>Describe any other obstacles that may make walking difficult for anyone that is mobility, visual, or hearing impaired.</p>			
<p>Are there enough designated crosswalks near the school?</p> <p>If no, where are they needed?</p> <p>If yes, are they accompanied by a stop light, flashing yellow lights in the pavement, or other signal?</p>			
<p>Do crossing guards or school monitors help students enter school grounds?</p> <p>If no, provide location where crossing guards and monitors are needed.</p>			
<p>Do the students have access to the school grounds from 3 - 4 sides of the property?</p>			
<p>Are there any high speed (30 mph or more) streets near the school?</p> <p>If yes, is there a lower School Zone speed limit posted for when school is in session?</p>			
<p>Are there school speed limit signs, overhead school flasher speed limit signs, and/or speed feedback signs?</p> <p>Where should they, or more of them, be added?</p>			

Have you documented all your school concerns?			
If no, what are they?			



Roundhouse Memorial Park trail



PREVENTION RESEARCH CENTER
Prevention & Population Sciences

2703 Frontier, NE | RIB Suite 120, Albuquerque, New Mexico 87131
Ph: 505-272-4462 | Website: <http://prc.unm.edu>